

# e-geos

AN ASI / TELESPAZIO COMPANY

COSMO Sky-Med © ASI produced and distributed by e-GEOS

## SEonSE<sup>®</sup> Smart Eyes on SEas

Through e-GEOS, the Telespazio group, is global leader in geoinformation services and applications. The full range of services are available in the UK from Telespazio UK.

**SEonSE<sup>®</sup> (Smart Eyes on the SEas) is the Maritime Surveillance and Awareness Platform** for multiple applications, including maritime security and surveillance,

monitoring of illegal traffic, environment protection, marine resources management, emergency and market analysis as well as fight against piracy.

SEonSE delivers maritime domain awareness applications in Near Real Time and it leverages on advanced engine for processing of multi-Radar/Optical data. The platform uses COSMO-SkyMed, a constellation of radar satellites, data and integrates maritime traffic data (e.g. AIS), vessel databases, meteo and satellite open data.



SMART ACCES  
TO INFORMATION



GLOBAL AND 24/7  
NEAR REAL TIME MONITORING



AUTOMATIC EARLY WARNING



ADOPTION OF MULTIPLE-SENSOR



INTEGRATION WITH MARITIME  
COOPERATIVE SYSTEMS AND  
METEO DATA



EXTRACTION OF BIG DATA  
ANALYTICS AND MARITIME  
PATTERNS OF LIFE

**SEonSE platform provides 24/7 operational Maritime Surveillance Services** to Institutional Users (Navies, Coast Guards, Police Corps, EMSA) and private Customers (O&G, security, analytics and shipping companies) since more than 10 years. **SEonSE allows a continuous global monitoring of the seas**, processing huge amount of data, detecting anomalous behavior and deriving maritime patterns of life, offering a customizable multi-function and complete service chain, providing Customers with **flexible and easy access to information derived from radar and optical satellites** integrated with ancillary data, such as **vessel identification and met-oceanographic data**.



## SERVICES

- ◀ SHIP DETECTION AND TRACKING
- ◀ GLOBAL SYSTEMATIC MONITORING FOR INTELLIGENCE AND SECURITY
- ◀ OIL SPILL MONITORING AND PREDICTIVE EVOLUTION
- ◀ ICE MONITORING
- ◀ ACCESS TO GEOSPATIAL BIG DATA ANALYTICS AND MARITIME PATTERNS OF LIFE

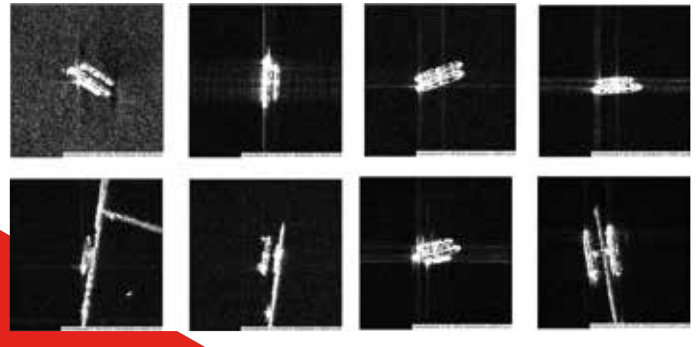
The solution relies on a **geospatial hub infrastructure** where data from most of the available commercial radar and optical satellites are processed and analyzed. Federation of spatial data from multiple sources and the big data analytics technologies are creating information superiority for the maritime domain.

SEonSE provides **customized on-demand monitoring services** for specific requirements (e.g. Oil Spill, illegal fishing, anti-piracy, intelligence and security).

SEonSE offers **multi-channel data** delivery: online Portal, offline standard and custom file formats (e.g. KML) data, online API (OGC compliant).

SEonSE is able to store, calculate and show **backtracked and forecasted paths** of specific targets or over defined areas, highlighting abnormal behaviours of vessels and features.

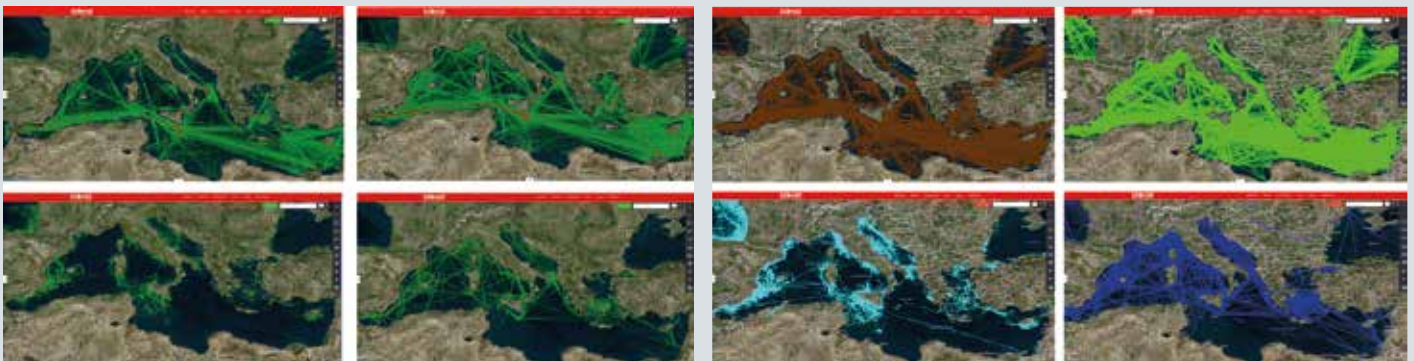
SEonSE provides an **automatic alert workflow** based on customizable rules through different communication channels: online displayed alert messages, e-mails, SMS, phone calls.



*Abnormal behaviours of vessels approaching and performing meeting at sea*

## ANALYTICS

Extraction of geospatial big data analytics and maritime patterns of life: Maritime Traffic profiling over the Mediterranean Sea.



Density

Routes

e-GEOS is the world-wide exclusive distributor of COSMO-SkyMed constellation data, providing at least 4 data acquisition opportunities every day, anywhere in the world within 2 hours from the satellite sensing.